



## PRESSURE TRANSDUCERS

BULLETIN DB-89 QPL  
PART #K796421

# Model 89 QPL Pressure Transducer

## FEATURES

- ◆ QPL approved to MIL-P-24212C (SH).
- ◆ Non-interacting zero and span adjustments for quick calibration.
- ◆ Mounting interchangeable with existing instrument mounts.
- ◆ Pressure connections conform to MS16142.

## DESCRIPTION

The Model 89 pressure transducer has been specially designed to meet the needs of military and/or marine applications and conforms to military specification MIL-P-24212C (SH). The Model 89 accurately measures pressures and transmits a fully adjustable 4-20 mA output signal for remote display, recording or control.

The Model 89 is available in gage, compound, vacuum and absolute ranges from 30"Hg vacuum to 0-6000 psi.

**DIRECT REPLACEABILITY:** The Model 89 transducer is directly interchangeable with all existing pressure transducers designed to MIL-P-24212C (SH). The mounting is designed to match the footprint of existing transducers for quick and easy installation.

**MINIMAL MAINTENANCE:** Calibration is quick and easy with the non-interacting zero and span adjustments.



**DESIGNED FOR DEPENDABLE PRESSURE  
SERVICE IN MARINE AND MILITARY APPLICATIONS**

## SPECIFICATIONS

### FUNCTIONAL SPECIFICATIONS:

in accordance with MIL-P-24212C (SH)

**APPLICATIONS:** steam, oil, sea water, flue gas, ammonia, oxygen, other gases, fresh water, condensate

**OUTPUT:** 4-20 mADC

**POWER SUPPLY:** 28 VDC with reverse protection

**LOOP RESISTANCE:** 0-250 ohms

**ZERO/SPAN ADJUSTMENTS:** 8% F.S. output

### TEMPERATURE LIMITS:

Compensated: 0°C to 65°C (32°F to 149°F)

**OVER PRESSURE:** 200% of range up to maximum of 10,000 psi (whichever is less)

**HUMIDITY:** 0-100% RH

**VOLUMETRIC DISPLACEMENT:** less than 0.002 cc

### PERFORMANCE SPECIFICATIONS

**ACCURACY:**  $\pm 1.0\%$  of calibrated span including linearity, hysteresis, and temperature effects

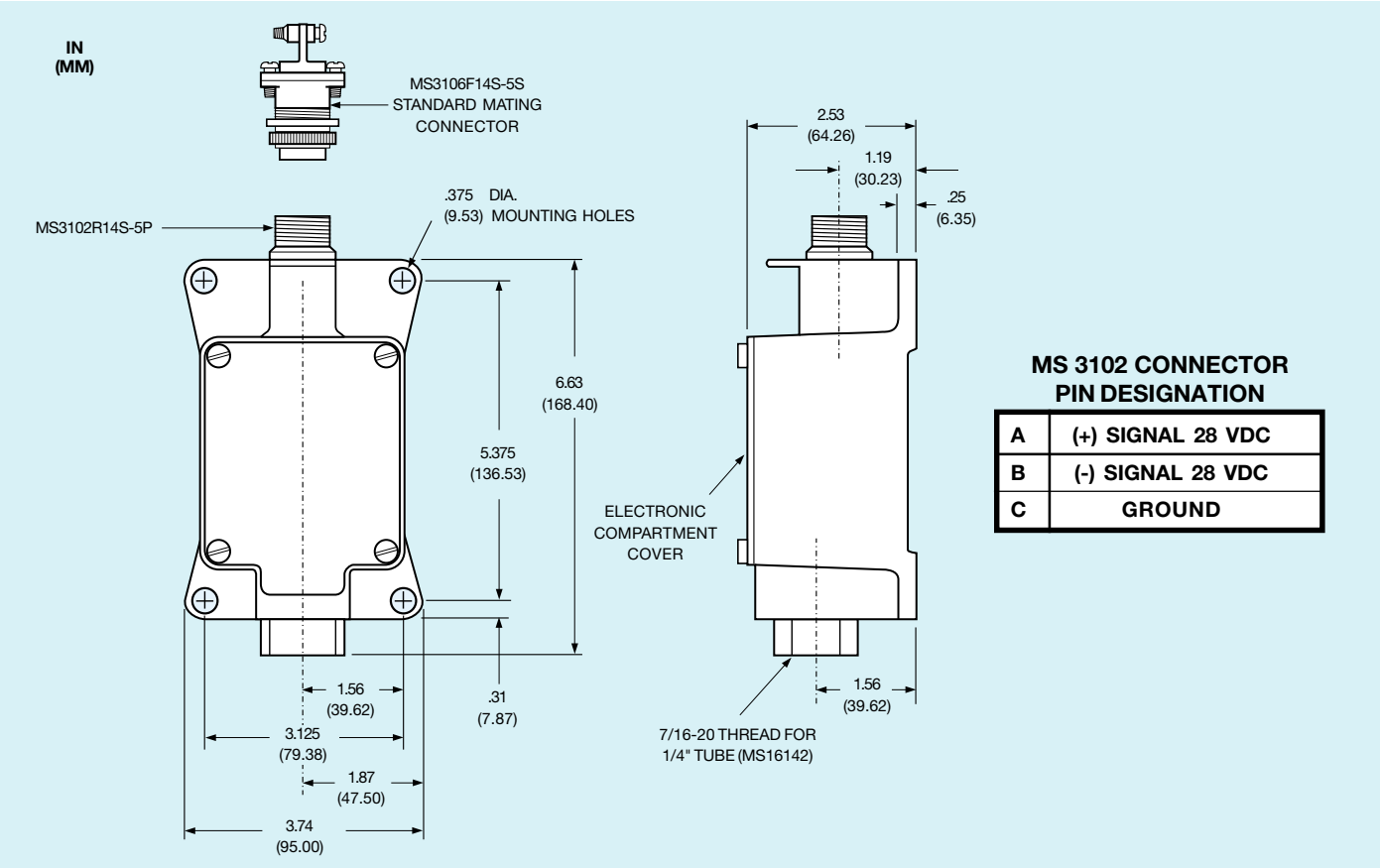
**REPEATABILITY:** within 0.5% of span

**SHOCK TEST:** in accordance with Grade-A, Class I, Type C of MIL-S-901

**EMI:** in accordance with MIL-P-24212C (SH)

# Model 89 QPL Pressure Transducer

## DIMENSIONS



SPECIFICATIONS SUBJECT TO CHANGE WITHOUT NOTICE

MIL SPEC  
AMETEK

PGT  
89 PGT

GP  
GP

30  
30

G  
G

2  
2

CONN.

### TYPE

AMETEK	MIL SPEC 1,2,1,1
89 PGT	PGT
89 PCT	PCT
89 PVT	PVT

### APPLICATION

DIAPHR. MATERIAL	AMETEK	MIL SPEC 1,2,1,4
CRES	GP	GP
NI CU	SW	SW
CRES	FG	FG
NI CU	OX	OX

### POWER SUPPLY

AMETEK	MIL SPEC 1,2,1,7
2	2

### NON-STANDARD CONNECTION OPTIONS

CONTACT AMETEK FOR CONNECTION  
OPTIONS

### REFERENCE

AMETEK	MILSPEC 1,2,1,6
G	G (GAGE)
A	A (ABS.)

### RANGE

PRESSURE*	AMETEK	MIL SPEC 1,2,1,5
0-5 PSI	5	5
0-15 PSI	15	15
0-30 PSI	30	30
0-50 PSI	50	50
0-60 PSI	60	60
0-75 PSI	75	75
0-100 PSI	100	100
0-150 PSI	150	150
0-200 PSI	200	200
0-300 PSI	300	300
0-500 PSI	500	500
0-600 PSI	600	600
0-1000 PSI	1000	1000
0-1500 PSI	1500	1500
0-3000 PSI	3000	3000
0-5000 PSI	5000	5000
0-6000 PSI	6000	6000
0-10000 PSI	10000	10000
30"Hg-0-15 PSI	15	15
30"Hg-0-30 PSI	30	30
30"Hg-0-100 PSI	100	100
30"Hg-0-150 PSI	150	150
0-30"Hg	30	30

\*PSIA, PSIG, PSIS, in Hg as applicable

**AMETEK®**

U.S. GAUGE • PMT PRODUCTS

820 PENNSYLVANIA BLVD., FEASTERTVILLE, PENNSYLVANIA 19053 U.S.A.  
TEL: (215) 355-6900 • FAX: (215) 355-2937 • [www.ametekusg.com](http://www.ametekusg.com)

**ISO 9001** REGISTERED  
MANUFACTURER

© 1998, by AMETEK, Inc.  
1.5M398I (110039)



Printed in the U.S.A.  
on recycled paper